

SENATOR DONOVAN M. DELA CRUZ

SERVING HAWAII'S 22ND SENATORIAL DISTRICT

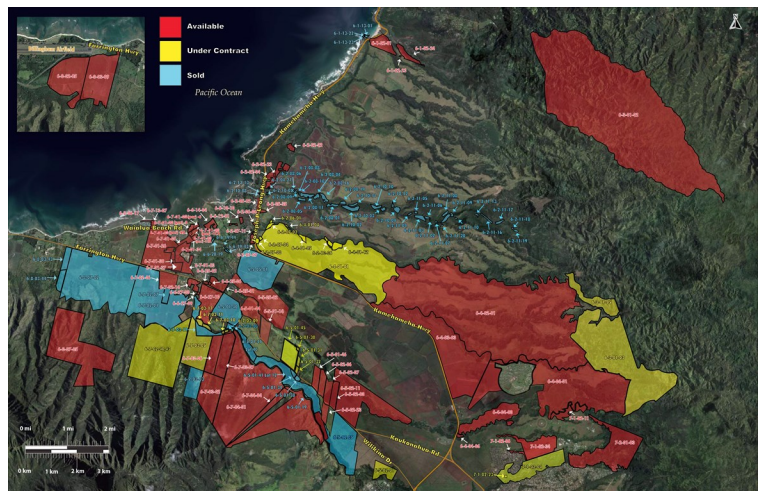
Newsletter

January 2014

Land Exchange

Bill seeks to trading land at rail station for acreage held by Dole

In a creative land swap, the state would trade about 925 acres near the planned East Kapolei rail station to Castle & Cooke for redevelopment in return for some 20,000 acres of Dole Food Co. land between Wahiawa and the North Shore that would be preserved for agriculture and conservation. This exchange would help achieve the transit-oriented development necessary for the success of the Honolulu rail project and advance the state's interest in protecting agriculture and open space from urban encroachment. If the state doesn't take an active role in making sure that it stays in conservation, we could be at risk of it being piecemealed out to private developers or private land-owners.



The proposed bill will also establish an East Kapolei Community Development District, which could help ease redevelopment around the planned rail station if the roughly 925 acres of state land is acquired by Castle & Cooke. The East Kapolei station is the first along the 20-mile rail line to Ala Moana Center and is in the heart of a region already primed for development.

In addition, the bill would also create a Whitmore Project special fund that would hold the proceeds of revenue bond sales that might be used to help purchase the Dole land. The value of the state land around the East Kapolei rail station might not be enough to match the Dole land, so the state could use revenue bonds to help finance the acquisition. The state budget already contains an authorization for \$175 million in revenue bonds to potentially purchase the Dole land, but needs the creation of a fund to handle the bond money.

The Dole lands include about 6,000 acres that could be leased for farming and ranching, and about 9,000 acres could be managed for recreation, hiking, hunting and watershed and species protection.

Mahalo,

Dementia is the progressive decline of a person's cognitive abilities of which Alzheimer's disease is the most common type. Due to the inevitable aging of the Hawaii population, the prevalence of age-related illness, including Alzheimer's disease, is expected to increase. By 2015, the Hawaii population over the age of 65 will increase by 67 percent. The Alzheimer's Association has projected that in 2025, there will be 34,000, or 10 percent, of Hawaii residents age 65 and older diagnosed with Alzheimer's disease.

This session, I've introduced legislation that seeks to establish within the executive office on aging an Alzheimer's disease and related dementia services coordinator to coordinate the provision of public and private Alzheimer's disease and related dementia services.

This program will expand support for people with Alzheimer's disease and their families by providing the following services: a family consultant with expertise in dementia care to provide in-home needs assessment, counseling, information, and assistance with care decisions; assistance for caregivers of individuals with Alzheimer's disease and related dementia in finding and selecting the type of respite and support services that best meets their needs; funding assistance when available for those who qualify for support of in-home personal care, adult day services, group respite, or overnight residential respite care for eligible families; training and educational resources for family caregivers, respite care providers, and community organizations; and linkage to community based agencies and the Alzheimer's Association – Aloha Chapter.

Community

Contact Us

State Capitol, Room 202
415 S. Beretania Street
Honolulu, HI 96813

P. 808.586.6090

F. 808.586.6091

E. sendelacruz@capitol.hawaii.gov

Visit us on the web at
www.capitol.hawaii.gov

Stay connected! Subscribe to our e-mail list to receive the latest legislative and district updates:

delacruz2@capitol.hawaii.gov



Mililani Middle School Selected to Participate in After-School Initiative

Mililani Middle School has been selected to participate in the pilot program R.E.A.C.H. (Resources for Enrichment, Athletics, Culture and Health). As part of the pilot program, Mililani Middle School received a check for \$45,000 which will fund their after school High Interest Programs (HIP).

The program, unveiled last year, aims to support learning opportunities during non-instructional hours at public middle and intermediate schools to help students stay on track toward high school graduation and better prepare for future success. Mililani Middle Principal Elynn Chung said the school's grant will support and increase participation in its existing after-school program, which offers extra-curricular activities that include music, technology, modern art and athletics.

Mililani Middle is offering 28 extra-curricular clubs and teams this school year, with 612 students enrolled. The program is expected to grow by 122 students, or by 20 percent, with the REACH funding, Chung said.

The HIP after-school program consists of extra-curricular activities that include music, technology, modern art and athletic exploratory opportunities. The program receives support from its school community council, Parent Teacher Student Organization, 65th Engineering Battalion (Schofield Barracks) as well as other organizations.

Started in March 2013, the R.E.A.C.H. initiative continues to develop and is currently being considered by the state Legislature to become a permanently funded program under the Office of Youth Services.

For more information on R.E.A.C.H., go to <http://reachouthawaii.org>.

